



This action convert your image to **Vector Art Photoshop Action**. Best effect on portrait images. This action works in a non-destructive way to achieve a high quality look. So, the original image layer will remain unchanged. This action has been tested and works on 100+ images and also checked on photoshop **CS6, CC, CC 2015, CC 2015.5, CC 2017, CC 2018 +** version. **Follow me** on graphicriver for latest updates. This action work only in English version if you want to change language then **CLICK HERE**

## INSTRUCTIONS

1. Your photo should be in **RGB Colour** mode and **8 Bits/Channel**. To check this, go to **Image > Mode**. Check in *Figure 1*
2. Your photo should be the Background layer. If it is not, go to **Layer > New > Background from Layer**. Check in *Figure 2*.
3. This Action Work only in English Version if you want to change language then [click here](#)

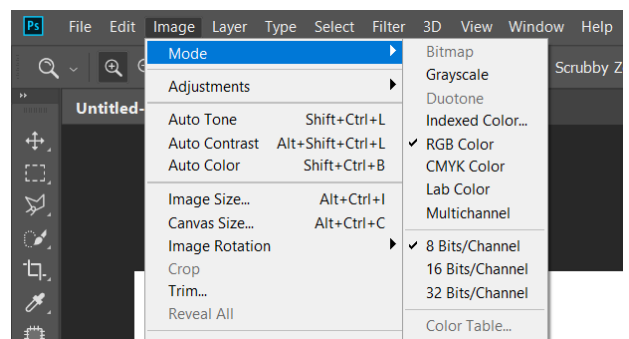


Figure 1

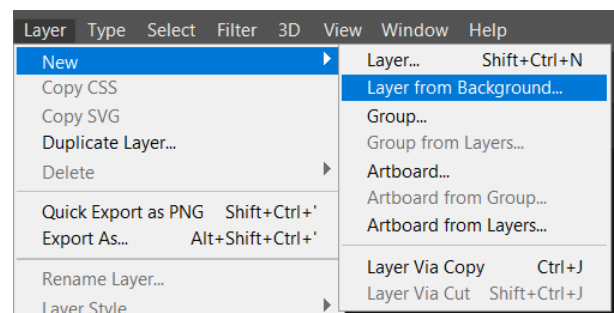


Figure 2

4. Click the **fly-out** list of the Layers panel and click **Panel Options....** Make sure Add "copy" to Copied Layers and Groups is checked. *Figure 3 & 4.*

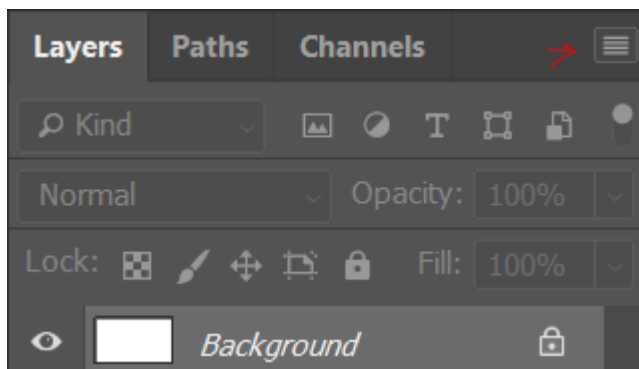


Figure 4

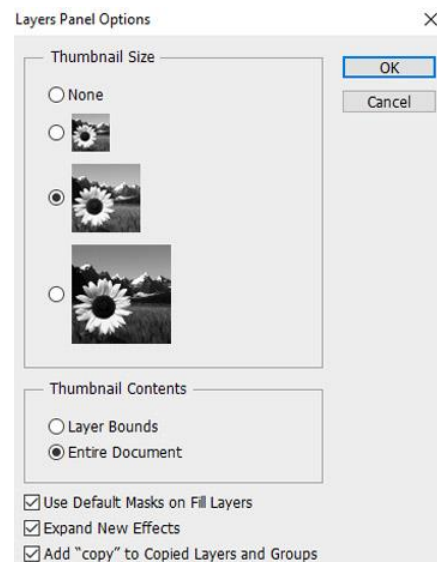


Figure 3

5. Make sure your brush opacity and flow 100% check *figure 4*. This menu shows when you select brush from toolbox. *Figure 5.*

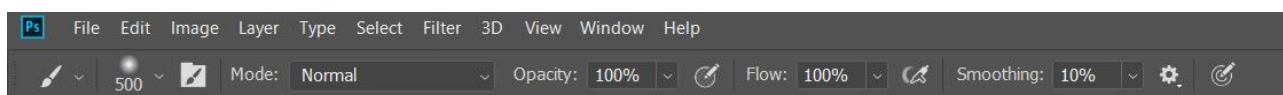


Figure 5

6. If you have done everything and **still getting errors, please reset your preference files.** 'Edit > Preferences > General' and then selecting 'Reset Preferences' then restart photoshop.

## How to load Action, brush and pattern file.

### Load Brush:

Go to **Edit > Presets > Preset Manager...** In the Preset Manager window, select Preset Type: Brushes and click Load...

### Load Pattern:

Go to **Edit > Presets > Preset Manager...** In the Preset Manager window, select Preset Type: Pattern and click Load...

### Load Action:

Go to **Window>Action(Alt+F9)**, Click the **fly-out** list of the Action panel right side to load action.

## How to Set Up Your Document

1. Just open your image on which you want to work. To open your photo, go to **File > Open...**, choose your photo, and click Open.
2. Play Step 1 and select hard brush tool with any colour and paint over on brush layer where you want to apply effect. After Complete this your layer panel look like *Figure 6*.
3. Now play Action Step 2.
4. When action process complete then make some adjustment own. Like brushing, change pattern according your design and colour manipulating.

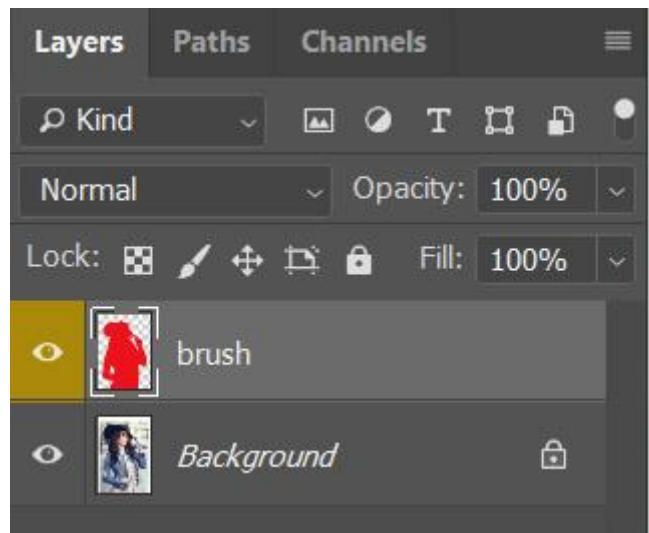
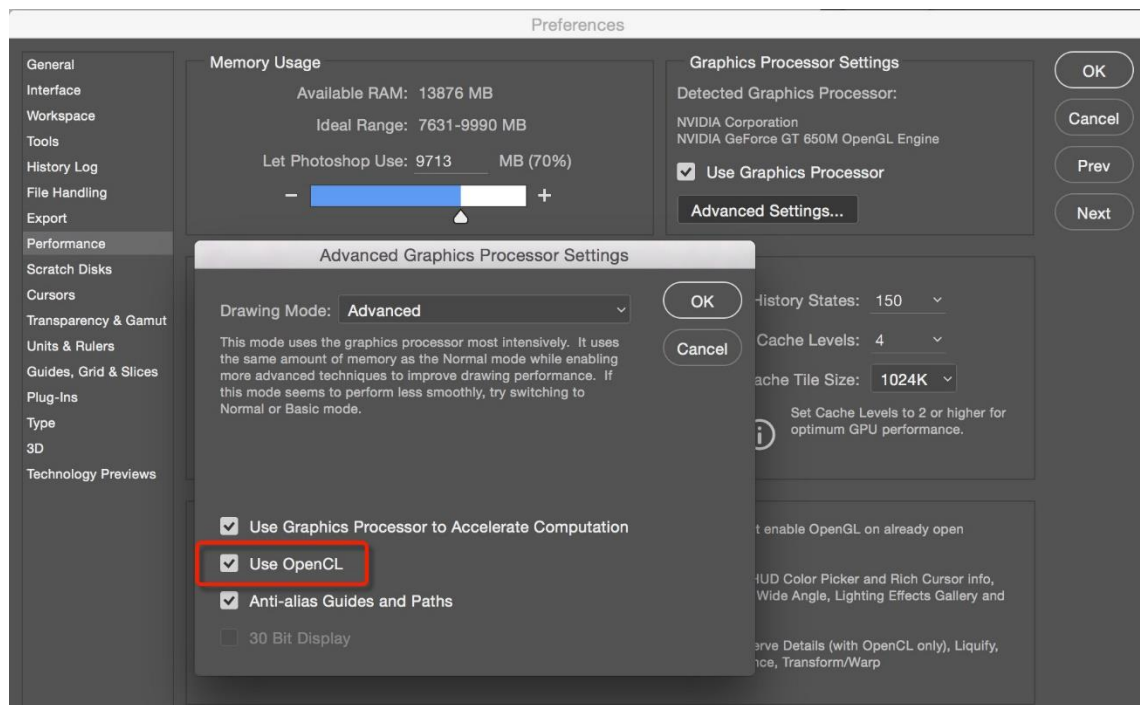


Figure 6

## Oil Paint Filter Problem:

Oil Paint Filter was introduced in **Photoshop CS6**. So, make sure you are using CS6, CC2015.5, CC2017 and above version. Some action files use oil paint filter, if you are using an action with oil paint filter then check these instructions.

1. Firstly [check this setting](#) and see below screen shot and Make Sure Use Graphics Processor is checked under Preferences > Performance for more detail check [this video](#).



2. Make sure your image mode **RGB** and **8bit/channel**
3. **OpenCL** requires **64-bit** window OS
4. Your Video Card must be updated with latest version.
5. If your video card doesn't support **OpenCL v1.1** or higher then oil paint filter not working

In case you come across any problem, please contact me via my profile or e-mail me photo where you want to apply the action. [haicamon@gmail.com](mailto:haicamon@gmail.com)

Check my other items.

<https://graphicriver.net/user/haicamon/portfolio>

I hope you like the designs.

**PLEASE, DON'T FORGET TO RATE THIS PRODUCT**

Thanks...